



## PRODUCT CATALOG

2025

# About AIV

## Who We Are



AIV has been supporting biomedical and clinical engineering professionals for over 35 years. We are a privately owned company located just outside of Baltimore, MD.

Our close proximity to the Baltimore Washington International Airport enables us to quickly and efficiently ship our products to customers all over the world. Our 20,000 square foot facility encompasses all operations at AIV – from accounting to repairs.

We specialize in medical device repair and the sale of related parts and accessories such as power cords, AC Adapters, and special purpose relocatable power taps.

## Certified and Regulated to Give You Confidence

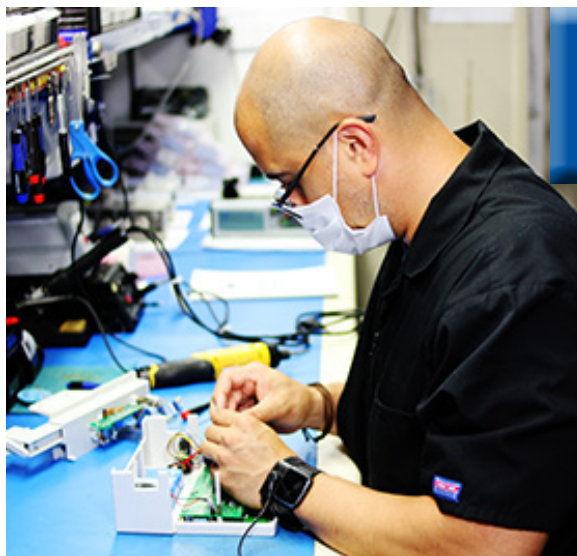
Everything we design, manufacture and repair is done in our ISO 13485:2016 certified facility. We are inspected annually by our registrar in order to keep this certification. In addition, several of our medical devices are FDA cleared devices, and our PowerMATE® line of special purpose relocatable power taps are recognized to UL1363A standards for safe use in patient care areas. We do all of this to ensure our customers are receiving a quality, factory equivalent product every time they open an AIV box.

AIV strives to provide you cost effective options to service equipment. We offer flexible solutions to best suit your needs. Need something that's not in our catalog? Call us - we will do everything we can to help you out.



# Table of Contents

AC Adapters .....	18	Fetal Transducers - New .....	15
Alaris Infusion Pumps .....	5	Fetal Transducer Repairs & Repair Kits .....	16
Curlin Infusion Pumps .....	13	Flat-Rate Infusion Pump Repairs .....	3
Baxter Infusion Pumps		GE Telemetry & Repair Kits .....	14
AS40 / AS50 .....	10	GE Elastomer .....	17
Flo-Gard 6201 .....	11	ICU Medical/Hospira Infusion Pumps .....	8
Flo-Gard 6301 .....	12	Medfusion Infusion Pumps .....	7
InfusOR.....	9	Power Cords .....	18
BiPAP Vision Ventilators.....	13	PowerMATE® .....	19
Bolus Cables .....	18	Refurbished Infusion Pumps .....	4
		Warranty Information .....	21



## No OEM Support? No Problem! Our End of Life Infusion Pump Support Has You Covered

A cornerstone of AIV's business is the support of infusion pumps deemed "End of Life" (EOL) by the Original Equipment Manufacturer (OEM). We offer replacement parts and repair services for these EOL pumps for a minimum of five years after the OEM stops supporting them.

*DISCLAIMER: AIV is an independent third party medical device repair and manufacturing company. The manufacturers listed are the holders of their respective names and/or trademarks, and are not to be taken as an endorsement or affiliation with AIV, Inc. Any images used in this catalog are for illustrative purposes only.*

# Pump Repair

## AIV Flat & Fixed Rate Repair

### Flexible Repair Options to Better Suit Your Budgeting Needs

AIV offers repair services for many popular infusion pump models. All AIV repairs are performed in our ISO 13485:2016 certified facility to strict quality standards and include a 6-month warranty. We offer both flat rate, all inclusive pump repairs and fixed-rate (parts extra) labor repairs to better suit your budgeting needs.

#### Pumps Eligible for AIV Flat Rate Repair

All inclusive pump repair (missing parts will incur an additional charges)



**Alaris:** 8100 LVP, BD 8100LVP

**Baxter:** InfusOR, Flo-Gard 6201, Flo-Gard 6301, PCAII, AS40, AS50

**Medfusion:** 2001, 2010, 2010i, 3010, 3010A, 3500, 4000

**ICU Medical/Hospira:** Plum 360, Plum A+, Plum A+ Mechanisms, Plum XL, Plum XL3, Lifecare 4100

**IMED:** PC-1, PC2-TX

#### Pumps Eligible for AIV Fixed-Rate Repair

All parts and labor charges fluctuate based upon the repair needs.



**Alaris:** 8100 LVP, POC 8015, BD 8100 LVP, BD 8015 M2,

Medsystem III, 2860, 2863, 2865

**Baxter:** InfusOR, Sigma Spectrum

**Medfusion:** 2001, 2010, 2010i, 3010, 3500, 4000

**ICU Medical/Hospira:** Plum A+ Mechanisms, Plum XL3, Plum 360, Lifecare 4100

**BBraun:** Outlook 100/100ES, 200/200ES, 300/300ES, 400/400ES, Space, Space Perfusor, Vista

**IMED:** PC1, PC2, PC2-TX

# Refurbished Pumps

## AIV Certified Refurbished Infusion Pumps Factory Equivalent Performance at a Fraction of the Cost

AIV offers a comprehensive line of AIV Certified refurbished infusion pumps. These pumps are inspected, repaired and tested in our ISO 13485:2016 certified facility to ensure factory equivalent performance. Refurbished pumps come to you patient ready with a 12-month warranty.

AIV Certified Baxter Pumps
InfusOR
Flo-Gard 6201
AS50

AIV Certified ICU Medical/ Hospira Pumps
Plum A+
AIV Certified Alaris Pumps
Medley 8100 LVP Module

AIV Certified Medfusion Pumps
2001
2010
2010i
3500



*DISCLAIMER: The sale of these items may be subject to regulation by the U.S. Food and Drug Administration and state and local regulatory agencies. If so, do not purchase unless you are an authorized purchaser. If the item is subject to FDA regulation, we will verify your status as an authorized purchaser of this item before shipping of the item.*



Have old pumps taking up space? AIV will make you an offer!  
See page 21 for more information.

# Alaris Infusion Pumps

## AIV-Manufactured Replacement Parts & Repairs Carefusion Alaris 8100-Medley LVP

With new AIV-manufactured parts, flat and fixed rate repair, subassembly repair services, service agreements, and power supply accessories, AIV has got you covered with all Alaris needs.

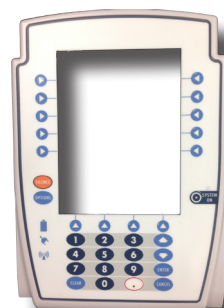
Carefusion Alaris Part Description	AIV Part #	OEM Ref. #
LVP 8100 Door Latch	AL12957	147085-100/49000222
POC 8015LS Front Case Assembly w/ Keypad	AL13315	TC10008335/8759
POC 8015LS Keypad	AL13314	N/A
POC 8015 Front Case Assembly w/ Keypad	AL13045	TC10006225/8580
POC 8015 Keypad	AL13041	N/A
Flat Rate Repair for 8100 LVP	FLRT8100	N/A
Fixed Rate Repair for 8100 LVP (parts extra)	RP8100	N/A
Fixed Rate Repair for Alaris 8015 (parts extra)	RPMEDLEY	N/A
PCA Handset Repair	REP148349000	N/A
Alaris-Compatible Power Cord	PC10775	148452-000
Refurbished 8100 LVP Pump Units	Alaris8100	N/A



AL13041



AL12957



AL13315

## Alaris Medsystem III Parts & Repairs 2860, 2863, 2865



Medsystem III Parts & Services	AIV Part #	OEM Ref. #
Lower Housing	AL11026	2860521
Clip Spring	AL11027	2860539
LCD Backlight	AL11124	2861131
AC Adapter (Inline)	AC10632	2861089
Fixed Labor Rate (Parts Extra) Repair	RPMEDSYS	N/A



# Alaris Infusion Pumps

## AIV-Manufactured Replacement Parts & Repairs

Becton Dickinson Alaris 8100-Medley LVP

AIV now offers support for BD Alaris pumps. With new AIV-manufactured parts, flat and fixed rate repair, subassembly repair services, service agreements, and power supply accessories.



Carefusion Alaris Part Description	AIV Part #	OEM Ref. #
LVP 8100BD Door Latch Assembly	AL13849	49000441
LVP 8100BD Door Assembly Kit	AL13837	49000438
LVP 8100BD Rear Case Assembly	AL13856	49000436/49000501
POC 8015 M2 Front Case Assembly w/ Keypad	AL13843	TC10012515/TC10013664
POC 8015 M2 Keypad	AL13845	N/A
Flat Rate Repair for 8100BD LVP	FLRT8100BD	N/A
Fixed Rate Repair 8100BD LVP (parts extra)	RP8100BD	N/A
Fixed Rate Repair for BD Alaris 8015 M2 (parts extra)	RPMEDLEYBD	N/A
PCA Handset Repair	REP148349000	N/A
Alaris-Compatible Power Cord	PC10775	148452-000

### We Repair Bolus Cables!

PCA Bolus Cable repair is available for Alaris pumps, for more info on handsets and other accessories on page 18.



# Medfusion Infusion Pumps

## AIV-Manufactured Replacement Parts & Repairs Medfusion 2000, 3000, & 4000 Series



Medfusion Parts & Services	AIV Part #	OEM Ref. #
Keypad Medfusion 2001	MD12611	084K200104
Keypad Medfusion 2010	MD12612	084K201002
Keypad Medfusion 2010i	MD12613	084K201i01
Top Housing Medfusion 2000 Series	MD12614	0482000000
Bottom Housing Medfusion 2000 Series	MD12615	04820001C1
Slide Housing Assembly 2000 Series	MD12995	0680A020X
Slide Door Medfusion 2000 Series	MD12999	482000501
Slide Saddle Housing Assembly	MD12998	0482000702
Top Case Assembly Medfusion 3010	MD13274	G6000736
Top Case Assembly Medfusion 3500	MD13269	G6000737
Top Case Assembly Medfusion 4000	MD13253	N/A
Left Plunger Assembly Medfusion 3500	MD13446	G6000439
Right Plunger Case Assembly Medfusion 3000/4000 Series	MD14105	G6001588
Bottom Case w/ Feet Medfusion 3000	MD13458	G6000754
Flat-Rate Repair Medfusion 2000 Series	FLRTMED2001/ FLRTMED2010	N/A
Fixed-Labor Repair Medfusion 2000 Series	RP2001/RP2010	N/A
Flat-Rate Repair Medfusion 3000 Series	FLRTMED3010/ 3010A/ 3500	N/A
Fixed-Labor Repair Medfusion 3000 Series	RP3010/RP3500	N/A
Flat-Rate Repair Medfusion 4000 Series	FLRTMED4000	N/A
Fixed-Labor Repair Medfusion 4000 Series	RP4000	N/A
AC Adapter/Charger Medfusion 2001, 2010, 2010i Wall Mount 2 Pin Plug	MEDRPL	2HC07

Looking for more AC Adapters  
and Power Cords?  
See accessories on page 18.




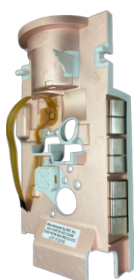


# ICU Medical/Hospira Infusion Pumps

## AIV-Certified Replacement Parts & Repairs Plum 360, A+, and XL

AIV-Manufactured Parts	AIV Part #	OEM Ref. #
Plum A+ Fluid Shield Assembly Non-MedNet	HO13340	840-95012-009/016
Plum A+ Fluid Shield Assembly w/ MedNet	HO13346	840-95012-010/015
Plum A+ Front Enclosure Assembly Non-MedNet	HO14025	841-12608-001
Plum A+ Front Enclosure Assembly w/ MedNet	HO14035	840-12609-001

AIV-Certified Used Parts & Repair Services	AIV Part #	OEM Ref. #
Pole Clamp Assembly Plum A+ - Recertified	84095115002RC	840-95115-002
CPU PCB Assembly Plum A+ - Recertified	81011949906RC	810-11949-906
PWA Power Supply Plum A+ - Recertified	81095242918RC	810-95242-918
PCB Power Supply Wireless Plum A+ 	81095614906RC	810-95614-906
Display PCB Plum A+ - Recertified	69295036403RC	692-95036-403
Power Cord Retainer Plum A+ - Recertified	71295065006RC	712-95065-006
Battery Door Plum A+ - Recertified	71295088003RC	712-95088-003
Pump Mech. Non-Shielded Plum A+ - Recertified	85595004003RC	855-95004-003
Pump Mech. Shielded Plum A+ - Recertified	85595004005RC	855-95004-005
Plum A+ Flat-Rate Repair	FLRTPLUMAPLUS	N/A
Plum XL Flat-Rate Repair	FLRTPLUMXL	N/A
Plum A+ Non-Shielded Mech Repair - Flat-Rate	REP85595004003	N/A
Plum A+ Shielded Mech Repair - Flat-Rate	REP85595004005	N/A
Plum XL Mech Repair - Flat-Rate	REP84000534910	N/A
Plum XL3 - Flat Rate	RPPLUMXL3	N/A
Plum 360 Fixed Labor (Parts Extra) Repair	RPHOSPPLUM360	N/A
Plum 360 Flat Rate Repair	FLRTPLUM360	N/A



HO13346



69295036403RC



HO14035



# Baxter InfusOR

## Nobody Does More for Baxter InfusOR

### Replacement Parts, Repairs, & AIV Certified Refurbished Pumps

AIV Specializes in End Of Life (EOL) service for several Baxter infusion pumps, including the InfusOR. We carry more parts and can repair more items on the InfusOR than anyone else. Call us today to see how we can extend the life of your Baxter InfusOR.



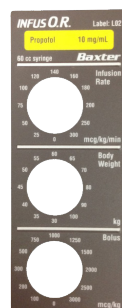
AIV-Manufactured Parts	AIV Part#	OEM Ref#
Front Case Label	BX12619	6461695
Front Case Assembly	BX12724	6461261RP
Rear Case Assembly	BX12727	6461345RP
Reed Switch	BX12781	6161490RP
Pusher Block Assembly	BX12791	6161492RP
Syringe Holder	BX12800	6465504RP
Smart Label - Propofol	BX12812	6461558
Switch Case Cover Assembly	BX13019	6461262RP
Mounting Bracket	BX13168	N/A
Non Locking Pole Clamp Assembly	BX13296	2L3212
Switch Knob Kit (4 knobs/labels per pack)	BX13332	N/A



BX12724



BX12724



BX12812



Switch Knob Kit  
(BX13332)



AIV Repair Services	AIV Part #	OEM Ref. #
InfusOR Repair Fixed Price Labor (parts additional)	RPINFUSOR	N/A
InfusOR Flat Rate Repair (parts and labor included)	FLRTINFUSOR	N/A

Need an InfusOR for your facility? We offer AIV certified refurbished InfusOR pumps. See page 4 for more details on refurbished pump purchasing options.

# Baxter AS40/AS50

## AIV-Manufactured Replacement Parts & Repairs

AIV can extend the life of your Baxter AS40 and AS50 pumps through AIV-manufactured parts, AIV-certified parts, and Flat Rate repair services.

AIV-Manufactured Parts	AIV Part #	OEM Ref. #
Barrel Clamp Assembly AS50	BX12344	AAS5001503RP
Front Case Assembly AS50	BX11952	AAS5001522RP
Battery Cover AS50	BX11989	AAS5001473
AC Adapter AS40 / AS50	ACAS50	CAS4001900
End Cap - Black Rubber AS40/50	BX12225	DAS4005481
Keypad Carbon Overlay	BX12540	DAS5001402
Lower Plunger Assy. AS50	BX12375	AAS5001508RP
Pole Clamp Assembly AS50	BX12302	AAS5001500RP
Power Connector AS40/50	BX12418	AAS4001522

AIV-Manufactured Parts	AIV Part #	OEM Ref. #
Rear Case Assembly AS50	BX11937	A069160000RP
Rubber Keypad Overlay AS50	BX12227	DAS5001401
Softpot Assembly AS50	BX12005	AAS5001527RP
Strain Gauge PCB	BX12226	AAS5001351RP
Switch Bezel AS50	BX12378	BAS5001603
Upper Plunger Assy. AS50	BX11990	AAS5001506RP
Zebra Strip AS50	11899SC	CAS4002801

AIV-Certified Used Parts	AIV Part #	OEM Ref. #
Main LCD Board AS50	AAS5001353RPRC	AAS5001353RP
RR I/O PCB AS50	DAS5001350RC	DAS5001350
Switch Retainer Spring AS40/50	BAS4001602RC	BAS4001602

AIV Repair Services	AIV Part #	OEM Ref. #
AS40 Flat-Rate Repair	FLRTAS40	N/A
AS50 Flat-Rate Repair	FLRTAS50	N/A



# Baxter Flo-Gard 6201

## AIV-Manufactured Replacement Parts & Repairs



AIV-Manufactured Parts	AIV Part #	OEM Ref. #
Right Door Assembly	BX10468	F049120021
Door Latch Assembly	BX10675	CHNDP100.F
Front Case	BX10610	GCABA104A
Rear Case	BX10938	GCABB104C
Keypad	HPNL1025A	HPNL1025.A
Complete Label Set	BX11073	072601081
Pump Head Cover	BX13029	GCOVA101A
Power Cord - 8 foot	PCM8	QACCD761.D
Battery Compartment Cover	BX13439	GFTAB101A
Power Cord Cover	BX13365	GCOVH101B
Tube Misloading Sensor - L/P2	10666	QSWZ1011A
Tube Misloading Sensor - R/P2	10667	QSWZ1012A
Thumb Shaft Assembly	BX12828	N/A
Power Cord Strap	BX13509	UBNDA100A
Pole Clamp Assembly	BX12685	F04912008

AIV-Certified Used Parts	AIV Part #	OEM Ref. #
Air Sensor Pump Assembly	S048993RC	F049120023
Backup Audio Alarm	CPWBN104CRC	CPWBN104C
Battery Harness	QCNW1094ARC	QCNW1094A
Buzzer Harness	QCNW1093ARC	QCNW1093A
Flat Ribbon Cable	QCNW1117ARC	QCNW1117A
CPU Board	CPWBX104ARC	CPWBX104A
Display Board	CPWBN104ARC	CPWBN104A
Panel Lock Switch Knob	JKNBZ101CRC	JKNBZ101C
Volume Control Knob	JKNBZ100CRC	JKNBZ100C
Occlusion Sensor	OCCSENAIVRC	N/A
PCB Assembly	CPWBN105ARC	CPWBN105A
PCB Sensor Board	CPWBX104BRC	CPWBX104B
Power Receptacle	QSOCA101ARC	QSOCA101A
Power Supply PCB	RDENC100DRC	RDENC100D
Safety Slide Clamp Assembly	CCRA1006ARC	CCRA1006A
Pump Head Seal	PGUMM103KRC	PGUMM103K
Housing Seal	PGUMM103JRC	PGUMM103J
PCB Terminal	CPWBN104BRC	CPWBN104B
Power Transformer	RTRNP100ERC	RTRNP100E
Vol / Lock Ground Plate	LANGQ103BRC	LANGQ103B

**See details on flat rate repair on page 3**

AIV Repair Services	AIV Part #	OEM Ref. #
6201 Flat-Rate Repair	FLRT6201	N/A



# Baxter Flo-Gard 6301

## AIV-Manufactured Replacement Parts & Repairs

AIV-Certified Used Parts	AIV Part #	OEM Ref. #
Air Sensor Pump Assembly - Left	S048992RC	S048992
Air Sensor Pump Assembly - Right	S048993RC	S048993
Backup Audio Alarm	CPWBN104CRC	CPWBN104C
Battery Harness	QCNW1094ARC	QCNW1094A
Battery Wire Harness	QCNW1116ARC	QCNW1116A
Buzzer Harness	QCNW1114ARC	QCNW1114A
Flat Ribbon Cable	QCNW1118ARC	QCNW1118A
CPU Board	CPWBX105ARC	CPWBX105A
Display Board	CPWBN105DRC	CPWBN105D
Panel Lock Switch Knob	JKNBZ101CRC	JKNBZ101C
Volume Control Knob	JKNBZ100CRC	JKNBZ100C
Occlusion Sensor	OCCSENAIVRC	N/A
PCB Assembly	CPWBN105ARC	CPWBN105A
PCB Sensor Board	CPWBX104BRC	CPWBX104B
Power Supply PCB	RDENC100ERC	RDENC100E
Safety Slide Clamp Assembly	CCRA1006ARC	CCRA1006A
CUE Safety Slide Clamp	CCRA1005ARC	CCRA1005A
Pump Head Seal	PGUMM103KRC	PGUMM103K
Housing Seal	PGUMM103GRC	PGUMM103G
PCB Terminal	CPWBN104BRC	CPWBN104B
Power Transformer	RTRNP100FRC	RTRNP100F
Power Receptacle	QSOCA101ARC	QSOCA101A



AIV-Manufactured Parts	AIV Part #	OEM Ref. #
Left Door Assembly	BX10469	F059120016
Right Door Assembly	BX10468	F049120021
Door Latch Assembly (P1)	BX10676	CHNDP100.G
Door Latch Assembly (P2)	BX10675	CHNDP100.F
Rear Case	BX10939	GCABB104D
Keypad	HPNL1026A	HPNL1026.A
Complete Label Set	BX11074	072601090
Power Cord - 8 foot	PCM8	5009410001
Power Cord Cover	BX13365	GCOVH101B
Tube Misloading Sensor - L/P1	10664	QSWZ1009A
Tube Misloading Sensor - L/P2	10666	QSWZ1011A
Tube Misloading Sensor - R/P1	10665	QSWZ1010A
Tube Misloading Sensor - R/P2	10667	QSWZ1012A
Pole Clamp Assembly	BX12685	F04912008
Power Cord Strap	BX13509	UBNDA100A
Battery Compartment Cover	BX13439	GFTAB101A

**See details on flat rate repair on page 3**

AIV Repair Services	AIV Part #	OEM Ref. #
6301 Flat-Rate Repair	FLRT6301	N/A



# Curlin & BiPAP Support

## Curlin 4000/6000 Replacement Parts

### *AIV Manufactured & AIV Certified Parts*



AIV-Manufactured Parts	AIV Part #	OEM Ref. #
4000 Front Case Assembly w/ Keypad	CM13185	N/A
4000/6000 Rear Case Assembly	CM13476	3401003
4000/6000 Battery Door Assembly	CM13467	3600091
6000 Front Case Assembly w/ Keypad	CM13685	N/A

## BiPAP Vision Ventilator Parts & Repairs

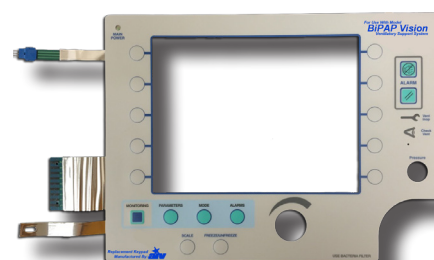


Broken parts on your BiPAP Vision Ventilator? AIV can help. We manufacture replacement parts for the front panel, keypad, oxygen baffle and filter cover. New filters are also available in packs of six for your BiPAP Vision.

AIV also provides flat rate repairs on the BiPAP Vision PCB and fixed-rate (parts extra) repairs for your BiPAP Vision.

AIV Manufactured Replacement Parts	AIV Part #	OEM Ref. #
Keypad	PH13520	453561504381
Oxygen Baffle	PH13606	453561504971
Filter Cover	PH13599	453561504651

BiPAP Vision Repair Services	AIV Part #	OEM Ref. #
BiPAP Vision Display PCB Flat Rate Repair	REP1003508	N/A
Fixed Rate Repair BIPAP Vision (parts extra)	MRMBIPAP	N/A



PH13520

## The 5-Minute Fix



PRO Series Case Kits



FH Series Case Kits



CH/Carescape  
Header Kit

Our AIV manufactured replacement case kits for GE telemetry allow you to replace the outer plastic, membrane switches and labels on many popular ApexPro / Pro FH models.

Fix your GE telemetry for a fraction of the cost of a repair, and have your unit up and running again in under 5 minutes with 3 tools required.

Replacement Case Kits and Parts	AIV Part#
Case Kit - GE ApexPro	GE13209
Case Kit - GE ApexPro CH	GE13213
Case Kit - GE Carescape	GE13224
Header Kit - GE ApexPro (white)	GE13300
Header Kit - ApexPro CH/Carescape (purple)	GE13217
Case Kit - GE ApexPro FH (old style)	GE13176
Case Kit - GE ApexPro FH (new style)	GE13175
Battery Holder - GE ApexPro FH Models	GE13144

## Flat-Rate MMS/TRAM & Telemetry Repair

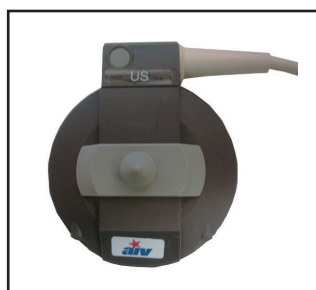
We offer flat-rate repairs for many Philips and GE MMS/TRAM modules and telemetry transmitters. Call us today for a flat-rate quote to repair your devices.



# New AIV-Manufactured Fetal Transducers

## Get New Transducers for Less

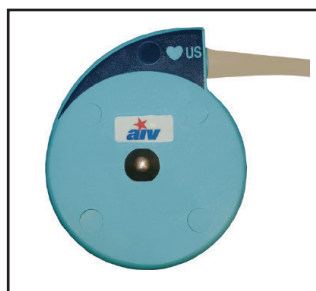
AIV offers a full line of new AIV-manufactured fetal transducers compatible with many popular GE and Philips systems. These FDA cleared devices are shipped from stock and include a one-year warranty.



HP/Philips  
Ultrasound

OEM P/N: M1356A  
AIV P/N: FM10835

Compatible Monitors:  
1350A, Viridia Series 50XM  
Comes in a button and clip style  
(button style pictured)



GE/Corometrics  
Ultrasound/  
Water Resistant

OEM P/N: 5700 LAX (Belt Style)  
5700 HAX (Button Style)  
AIV P/N: FM10833 (Belt Style)  
FM10834 (Button Style)

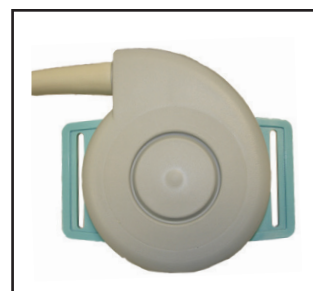
Compatible Monitors:  
116, 118, 120, 150, 151, 155,  
170, 250, 340 Tel



GE/Corometrics  
Tocodynamic/  
Water Resistant

OEM P/N: 2264 LAX (Belt Style)  
2264 HAX (Button Style)  
AIV P/N: FM10839 (Belt Style)  
FM10840 (Button Style)

Compatible Monitors:  
115, 116, 118, 120, 145, 150,  
151, 155, 170, 250, 340 Tel



# Fetal Transducers Repair

## AIV Gives You Options

*AIV transducer repairs receive a complete overhaul and cable replacement at a flat rate with no hidden charges. Every transducer is calibrated and tested before it is returned.*

*Looking to repair your transducers in-house? Check out AIV's fetal transducer repair kits that let you replace the exterior cases on your broken fetal transducers without having to send them out for repair.*

1

### AIV Flat Rate Repair - Send it to Us

#### Corometrics (GE)

**Ultrasound:** 5600, 5700, 5700 Nautilus

**Tocodynamic:** 2260, 2260 Trimline, 2264 Nautilus

#### Hewlett Packard (HP)

**Ultrasound:** 1356, M2736A Avalon

**Tocodynamic:** 1355, M2735A Avalon, M2734A Avalon

2

### AIV Repair Kits - Fix In-House



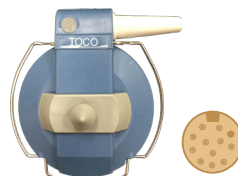
**Coro Toco 2264**

Available Parts	Part #
Belt Style Repair Kit	FM13377
Button Style Repair Kit	FM13382
Cable Nut & Set Screw Kit	FM13400



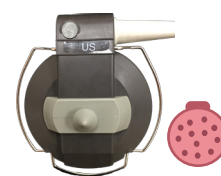
**Coro US 5700**

Available Parts	Part #
Belt Style Top Case Kit	FM13391
Button Style Top Case Kit	FM13394
Cable Nut & Set Screw Kit	FM13400



**Philips Toco 1355**

Available Parts	Part #
Blue Repair Kit	FM13385
Brown Repair Kit	FM13388
Attachment Kit	FM13397

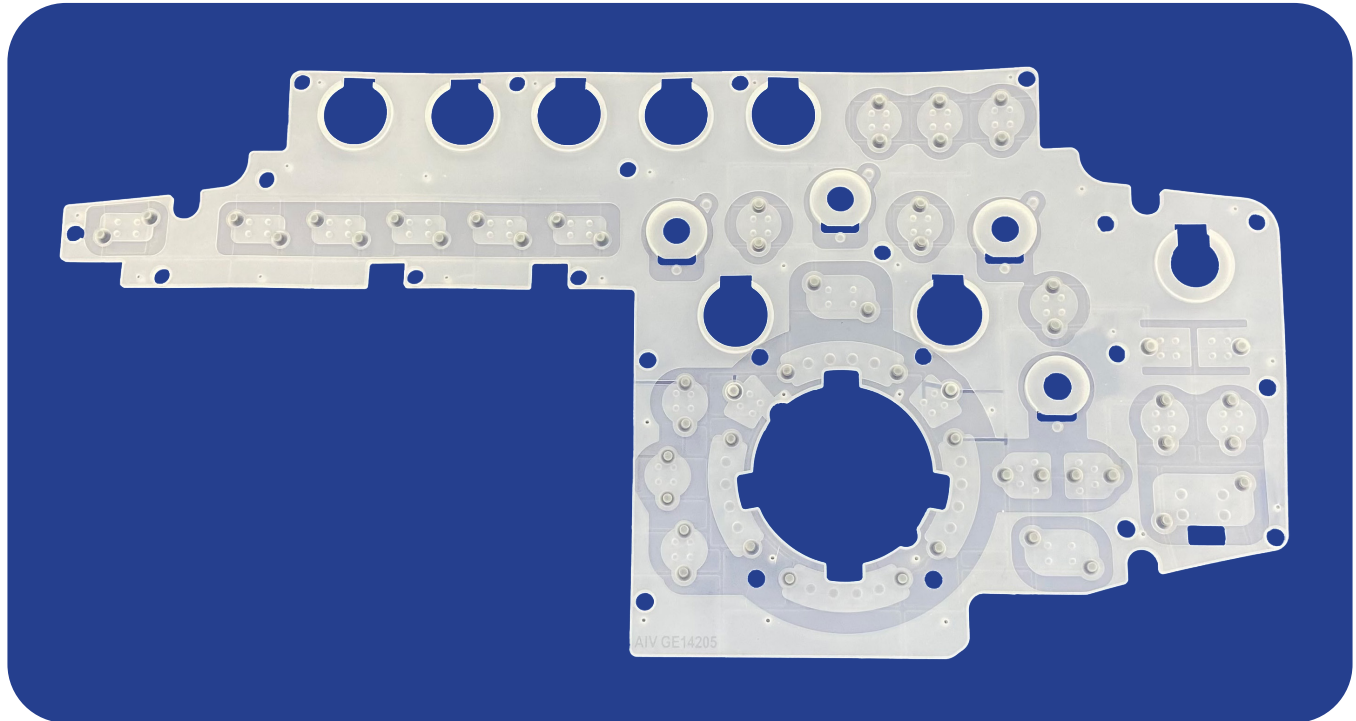


**Philips US 1356**

Available Parts	Part #
Replacement Cable Assy	10298
Attachment Kit	FM13397

# Monitoring

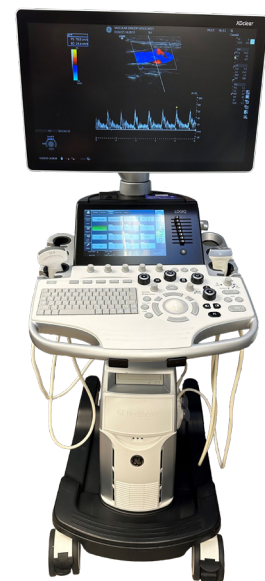
## Elastomer Replacement Keypad



The AIV manufactured replacement elastomer is a high-quality silicone component located beneath the keyboard of the lower control panel on the GE LOGIQ S7 / S8 OPIO4 ultrasound machines.

By replacing the elastomer, you can restore the keyboard's functionality without the need to replace the entire lower control panel, saving time and money on repairs.

AIV Manufactured Parts	AIV Part #
Keypad Underlay	GE 14205



**120 DAY WARRANTY**

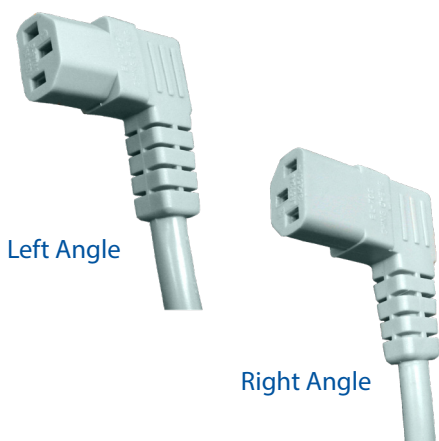
**IN-STOCK**  
SHIPS SAME-DAY



# Infusion Pump Accessories

## AIV-Manufactured Power Cords

All new AIV-Manufactured power cords and AC Adapters are engineered to be comparable with OEM and include a 90-day warranty.



Power Cords	AIV Part #
8ft 16AWG Straight	PCM8
8ft 16AWG Left Angle	PC1079606
18ft 16AWG Left Angle	PC1079604
25ft 16AWG Straight	PC1079404
10 16AWG Straight	PC10775
8ft 14AWG Straight	PC1079401
8ft 14AWG Right Angle	PC1079501
25ft 14AWG Left Angle	PC1079603
6ft 16AWG Down	PC11724

## AIV-Manufactured AC Adapters

AIV Manufactured AC Adapters	AIV Part #	OEM Ref. #
Baxter AS40, AS50	ACAS50	CAS4001900
QCore Sapphire Wall Mount	AC13819	15072-000-007
Medsystem III 2860/2863/2865	AC10632	2861089
Medfusion 2001, 2010, 2010i Wall Mount	MEDRPL	2HC07



## AIV-Manufactured Bolus Cables

AIV Manufactured Replacement Bolus Cables	AIV Part #	OEM Ref. #
Patient Pendant Bolus Cable Baxter PCAII	BC10747	6464565

Bolus Cable Repair Services	AIV Part #	OEM Ref. #
PCA Handset Repair for Alaris Medley	REP148349000	N/A



BC10747

## Safe. Convenient. Power.

### Special Purpose Relocatable Power Taps

AIV's PowerMATEs® are a family of relocatable, pole mountable power distribution products. Our special purpose relocatable power taps come in multiple models for different uses and offer accessories.



**Recognized component to UL1363A (Hospital Grade Models Only)**



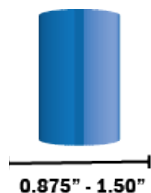
**Outlet receptacles on angled surface to easily fit large power adapters**



**15 foot hospital grade power cord**



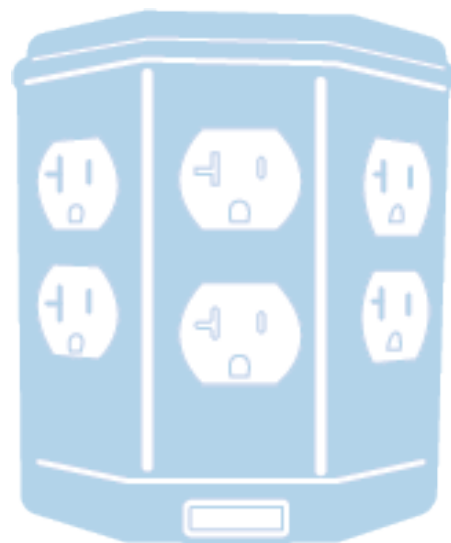
**Locking nut system for permanent pole attachment**



**Mounts to an IV pole with a diameter of 0.875 inches to 1.5 inches.**



**Includes locking outlet covers to prevent unauthorized outlet usage (Hospital Grade Models Only)**





PS12595

PS11076

**Recognized Component to UL 1363A**

LED Display Shows Current Usage in Real-Time!

**Current Monitoring (CM) 20 Amp**

Dual Rated  
Recognized Component to UL1363A  
UL Recognized 60601-1

Description	AIV Part#
PowerMATE® Hospital Grade 15 Amp	PS11076
PowerMATE® Hospital Grade 20 Amp	PS12595
PowerMATE®-CM Hospital Grade 15 Amp	PS13875
PowerMATE®-CM Hospital Grade 20 Amp	PS13890
PowerMATE® Hospital Tamper-Resistant 15 Amp	PS12744
PowerMATE® Industrial (Non-Hospital) 15 Amp	PS11610

PowerMATE® Accessories	AIV Part#
Locking Bolt with Nut	PS13825
Locking Outlets Covers (6 pack)	PS99999
Replacement Thumb Wheel (3 pack)	PS13376
ClampMATE Cable Clamps (5 pack)	PS12756



**For further information on AIV's PowerMATE® visit our website where you can download the [free informational guide](#) on how PowerMATE® can increase your access to power in patient care areas.**

# Warranty Information

Everything AIV manufactures or repairs comes with a comprehensive warranty. See the table below for warranty periods for each AIV product or service.

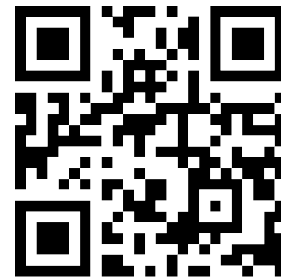
Parts	Warranty
AC Adapters / Power Cords	90 Days
Bolus Cables	120 Days
Case Kits - GE Telemetry	12 Months
Fetal Transducers - New	12 Months*
Infusion Pump Parts - AIV Manufactured	120 Days
PowerMATE®	12 Months
Recertified Infusion Pump Parts	60 Days

Repairs	Warranty
Fetal Transducer Repairs	12 Months
Infusion Pump - Fixed and Flat Rate	6 Months
Infusion Pump Mechanism	12 Months
Parameter Module / Telemetry Transmitters	12 months

*\*24 month warranty available on new fetal transducers for an additional cost*

## Pump Buyback Program

Do you have old infusion pumps lying around your facility? Turn your obsolete inventory into cash and put the money towards an upgrade. AIV buys unwanted IV pumps and pays the best value for your equipment.

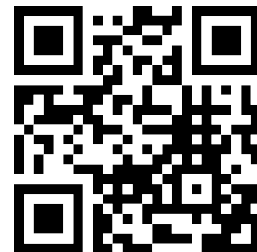


Call AIV's infusion pump experts today to see how much your pumps are worth at **(888) 322-4218**. Any condition, we will make you an offer!

AIV repairs popular infusion pump brands including Baxter, Medfusion, Alaris, Hospira, and BBraun. AIV repairs other medical devices including parameter modules, telemetry transmitters, and fetal transducers. Need to send in your infusion pump or other medical device for repair? Fill our online repair form today.. Questions? Contact us using our online chat support.



Chat live with an agent now!



**Visit [aiv-inc.com](http://aiv-inc.com) where online ordering, finding parts, and industry updates are right at your fingertips.**

**Learn more about AIV, inquire about parts available with Live Chat and see how we can help you cut costs today.**



## **Not finding what you're looking for?**

If you have equipment that is frequently breaking and would like for us to make or repair parts, please let us know! We are always looking for new product ideas to help you reduce your operating costs.





**888.322.4218**  
**aivsales@aiv-inc.com**

For more information about the products and services we offer, or for additional copies of the catalog, please visit our website at [www.aiv-inc.com](http://www.aiv-inc.com).